

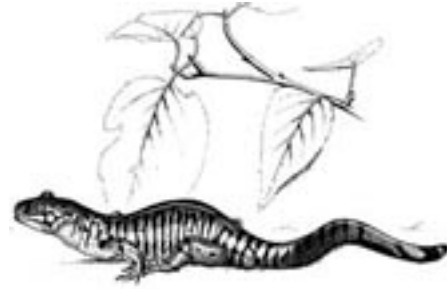


ACTIVITY SHEETS

Check the Program Section of our web site for more school programs.



TIGER SALAMANDER



- Tiger Salamanders live in wetlands near lakes and ponds.
- People are building houses around the lakes and ponds and putting pesticides in the water.
- This loss of habitat is causing the Tiger Salamander to become endangered.

- Look up the word ‘habitat’ in your dictionary. What does it mean?

- Look up the word ‘endangered’ in your dictionary. What does it mean?

- Name one way you can help to protect habitats and help save endangered animals and plants?

- Are Tiger Salamanders related to tigers? If not how do you think they got their name? What species do they belong to?

- How many words can you make from the letters in the name Tiger Salamander? There are at least ten.

_____	_____
_____	_____
_____	_____
_____	_____
_____	_____

Secrets of Survival

- Each of these animals has adapted to its environment in order to survive. Some insects ‘mimic’ poisonous insects. Some mammals have teeth for tearing or grinding. Some birds have extra-sensitive hearing.
- If people alter the environment too much some of these animals may not survive.
- Look at the animals below and try to determine what each of these animals eats, how it gets its food and how it protects itself.

Scoliid Wasp



White-tailed Jackrabbit



Viceroy



Look up the words ‘adapt’, ‘mimic’ and ‘environment’ in your dictionary. What do they mean?

Night Creatures

Pallid Bat

Bats have long, curved claws on their feet which they use for climbing, roosting and grooming. Look at the picture of this large, big eared bat. Can you see it's teeth?



Different kinds of bats eat different kinds of foods. Some examples are: fruit, insects, pollen, and blood.

What does the Pallid Bat eat and how does it catch its food?

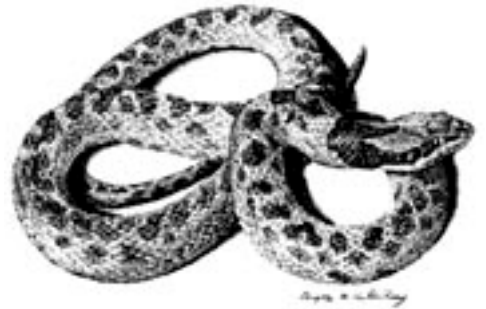
How do it's teeth help it catch and eat it's food?

How do bats move? _____

Why do you think bats need good hearing? _____

Night Snake

The Night Snake is a small, secretive nocturnal snake. During the day it is usually found under rocks or other cover.



Look up the word 'nocturnal' in your dictionary. What does it mean? _____

The Night Snake has rear venomous fangs. What does the word venomous mean? Look it up in your dictionary.

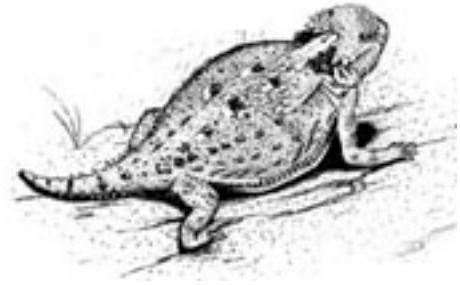
How would this snake defend itself?

Why do you think the Night Snake has become endangered?

Wildlife at Risk

Short-horned Lizard

Short-horned Lizards are reptiles that are active during daylight. They like to bury themselves in sand making it hard to find them.



Where do you think they live? _____

What do you think they eat? _____

What can we do to protect their habitat? _____

Short-horned Lizards have spines along the sides of their bodies and on their head and lips. To defend themselves they inflate their body, open their mouth and hiss.

Western Harvest Mouse

The Western Harvest Mouse is the smallest mouse in the province. It lives along the edges of farmlands and in dry gulleys amongst tall grass and shrubs in the Okanagan Valley.



Western Harvest Mice are approximately 13 cm in length. Measure your hand from the base of the palm to your fingertips. Is the mouse smaller or larger than your hand? _____

This mouse is part of the food for the Burrowing Owl. What else does the Burrowing Owl eat? _____

A Haiku is a Japanese poem. It is 3 lines long. Each line has a special number of syllables. The three lines total 17 syllables.

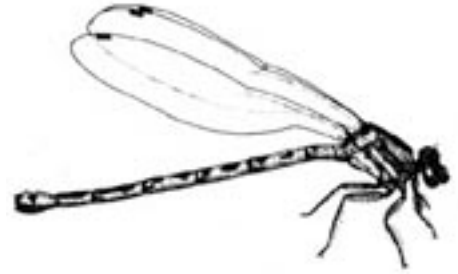
Line 1	5 syllables	Scurrying quickly
Line 2	7 syllables	Tiny, little Harvest Mouse
Line 3	5 syllables	In shrubs and grasses

Create your own haiku using a mouse theme.

Rare Invertebrate

Vivid Dancer

Vivid Dancers are damselflies. Dragonflies and damselflies are among the most ancient of insects. Fossilized wings that are 300 million years old have been found.



All damselflies and dragonflies belong to the order Odonata. This word comes from Greek meaning 'toothed jaws'. What does this word tell you about the type of food they eat? _____

How do you think this damselfly got its name? _____

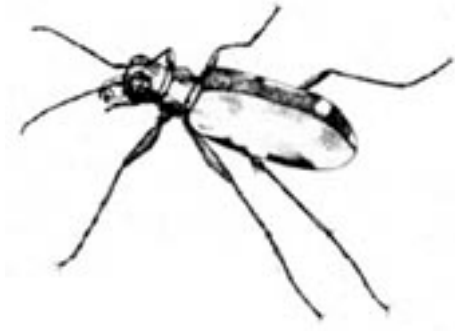
Vivid Dancers live around spring-fed pools and streams, that are usually located near hot springs. Man also likes to live around hot springs. How do you think this affects the Vivid Dancer? _____

A lantern poem is a poem written in the shape of a Japanese lantern. It has five short lines. Each line has a certain number of syllables. Use the example below to write your own lantern poem about damselflies.

Rare	line 1	1 syllable
Slender	line 2	2 syllables
Damselflies	line 3	3 syllables
Beside the lake	line 4	4 syllables
Joy	line 5	1 syllable

Draw the other half of the damselfly

Carnivorous Insects



Parowana Tiger Beetle
This beetle lives around the sagebrush basins in the Okanagan.



Ground Mantid
The Ground Mantid is an insect that looks like a grasshopper.

Ground Mantids and Parowana Tiger Beetles are carnivores. Look up the word in your dictionary. What does the word mean? _____

List four other animals that are carnivores. _____

What is unusual about the female Ground Mantid? (hint: look it up in the student text). _____

Look up the word 'herbivore' in your dictionary. What does it mean? _____

List two insects that are herbivores. _____

How do you think the Parowana Tiger Beetle got its name? _____

Make a list of words that you can use to describe insects. How many words can you come up with? Share your words with your classmates.

Nocturnal Rabbit

White-tailed Jackrabbit

The White-tailed Jackrabbit has a grey coat and long white ears with black tips and a white tail. The White-tailed Jackrabbit is nocturnal like the Night Snake. It builds a shelter near rocks and shrubs in summer. In the winter it burrows into snow drifts.



Look up the word nocturnal in your dictionary. What does the word mean?

Are all rabbits nocturnal? _____

Look up the word 'camouflage' in your dictionary. How does the White-tailed Jackrabbit camouflage itself? _____

The White-tailed Jackrabbit is a herbivore (look on the Carnivorous Insects sheet for the meaning of the word). What do you think it would eat?

Draw a picture of a White-tailed Jackrabbit in the snow.

Rare Bird

Sagebrush Brewer's Sparrow
This small bird is only 6 cm tall.
This is about the length of one of your fingers.



Measure your middle finger. Is it bigger or smaller than a Sagebrush Brewer's Sparrow?

In the Spring this bird migrates into the south Okanagan and Similkameen Valleys. Look up the word 'migrate' in your dictionary. What does it mean?

Name two other birds that migrate. _____

Sagebrush Brewer's Sparrows do not drink water, instead they get water from the food they eat. How would this help them in the dry climate they live in?

Look at the beak of this bird. What can it tell you about what it eats?

See how many words you can think of to describe the way birds move. We'll start you off. Compare your words with your classmates.

- | | | |
|---------------|----------------|---------------|
| • <u>dart</u> | • <u>glide</u> | • <u>soar</u> |
| • _____ | • _____ | • _____ |
| • _____ | • _____ | • _____ |
| • _____ | • _____ | • _____ |

Endangered Woodpecker



White-headed Woodpecker

Woodpeckers have sharp claws for climbing the trunks of trees. This woodpecker lives in mature Ponderosa pine forests.

This woodpecker eats different food than most woodpeckers. Can you find out what food the White-headed Woodpecker eats? _____

The White-headed Woodpecker does not build nests, it builds nesting-holes in the lower part of decayed trees. Look up the word decayed in your dictionary. What does the word mean?

Why do you think this woodpecker chooses decayed trees to build its nest-holes in?

In what way are woodpeckers important to man? _____

Draw a tree with a nest hole in it. Draw a White-headed Woodpecker beside the tree.

Did you know ?

There are more than 134 rare and endangered species in the Thompson-Okanagan region?

We have listed 15 of them.
See if you can find them by searching across,
backwards, or up and down

y e l l o w p a i n t b r u s h r s p
 v o y s c x a b v o p i r s t m o h o
 i y w s c o l i i d w a s p r e b o r
 v o t w q u l l b n j k l i r t b w c
 i r e a l n i s a g e g r o u s e y u
 d r a g h e d o n u p t a s d f r p p
 d f g o p l b f t g o o d r a s f h i
 a w e r t y a s l u c k a s d f l l n
 n m b v c o t u p t v i c e r o y o e
 c b u r r o w i n g o w l y u i o x -
 e n i g h t s n a k e l q u w e r t g
 r k h a i r y w a t e r - c l o v e r
 a s d f g h j s u n s c o r p i o n a
 w e s t e r n r i d g e m u s s e l s
 m n c x m o s q u i t o f e r n z b s
 y e l l o w i s h p a i n t b r u s h

- Night Snake • Pallid Bat • Yellowish Paintbrush • Sage Grouse
- Scoliid Wasp • Sun Scorpion • Porcupine-Grass • Showy Phlox
- Hairy Water-clover • Vivid Dancer • Robber Fly • Viceroy
- Mosquito Fern • Burrowing Owl • Western Ridge Mussel

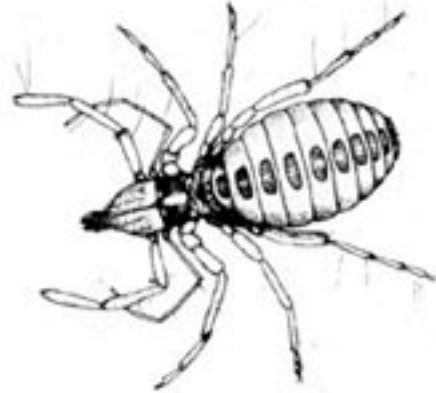
Defense

How do they do it?

Plants and animals including man, have different ways of protecting themselves. Some of the ways are; by having a hard outer skeleton, by being poisonous, by using camouflage, and by stinging. Look at the pictures and try and guess how these plants and animals protect themselves.

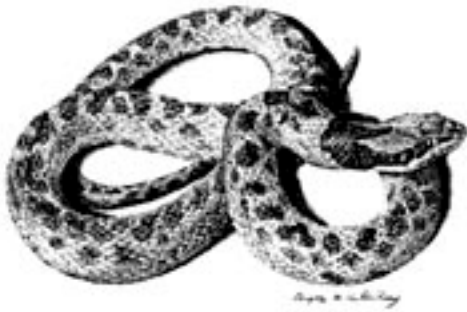


Ground Mantid



Sun Scorpion





Night Snake

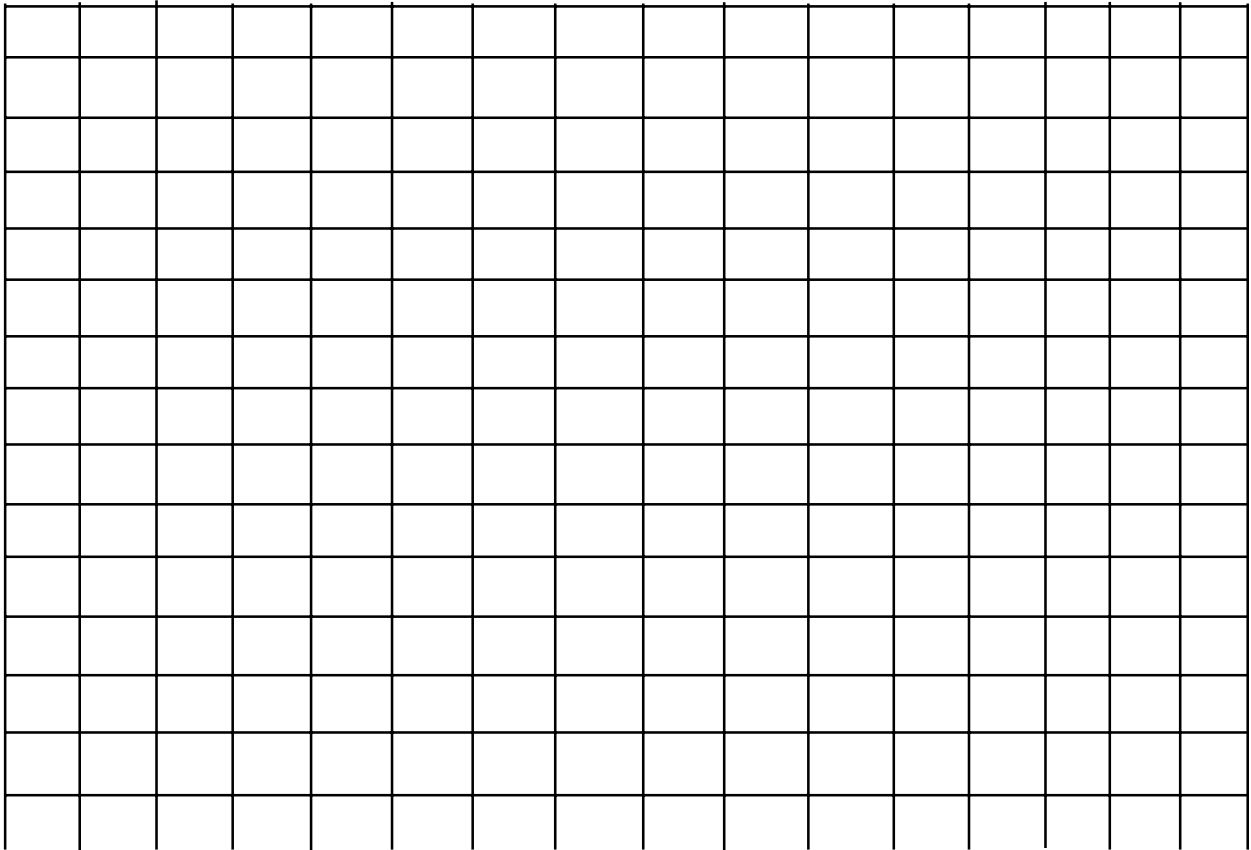


Parowana Tiger Beetle

Did you know?

You have learned many new words from the study of the Endangered Species, Endangered Spaces Unit. Using the new words you have learned, create your own word puzzle.

Trade puzzles with your friends. Have them try and locate your words while you try and locate theirs.



Word list:

_____	_____	_____
_____	_____	_____
_____	_____	_____
_____	_____	_____
_____	_____	_____
_____	_____	_____

Interview An Endangered Species

Select a species _____

What are the characteristics of your species? _____

Is your species a predator or a prey? Look up the words in your dictionary, then list the features that make your species a predator or a prey.

How does it move? _____

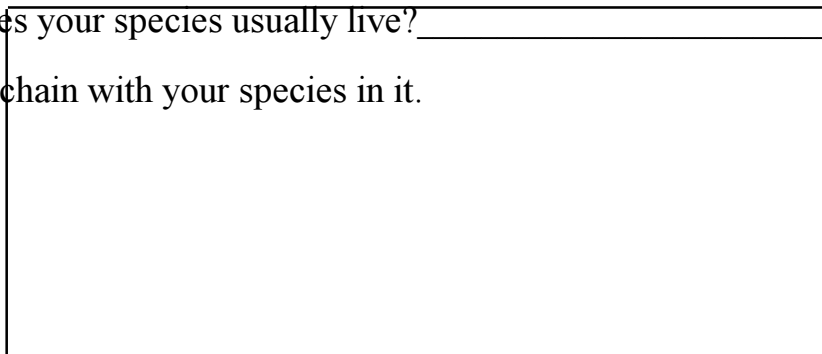
Where does it live? _____

What kind of house does it build? _____

List three things you find interesting about your species. Some examples, protective colouration, poisonous, feathered legs.

How long does your species usually live? _____

Draw a food chain with your species in it.



Why is your species endangered? _____

What can you do to help it survive? _____

Guess Who

Burrowing Owl

Owls are birds of prey. The Burrowing Owl is a long-legged, ground-dwelling bird. Look at the beak and feet of the owl.



The name of this owl suggests where it lives. Do you think it lives high up in the trees? If not where do you think it might live?

The Burrowing Owl hunts during the day not at night. What do you think it eats?

What is a bird of prey? _____

Owls have very good hearing and large eyes. How important is good eye sight and hearing to the owl?

The Western Harvest Mouse is part of the diet of the Burrowing Owl. What else does the Burrowing Owl eat? _____

Draw a food web and include the Burrowing Owl and the Western Harvest Mouse. What would the Western Harvest Mouse eat? _____

Colour your picture

Can You Draw It?

Biodiversity means differences, differences in the kinds of animals and plants on our earth.

Pick an animal or plant and answer the questions then draw a picture of it.

It is; _ (circle your answer) an insect, bird, plant, mammal or reptile?

I know this because _____

The name of my animal is _____

It lives _____

Its size and colour are _____

Here is something I know about my animal. _____

My animal is endangered because _____
